

Google Nest and Google Home devices for support in the home



Google Home

Summary: This document aims to provide an easy-to-understand guide on how Google Nest and Google Home devices can support various social care needs.

It will cover the following areas of support in the home:

- Medication Management
- Smart Home Control

Medication Management

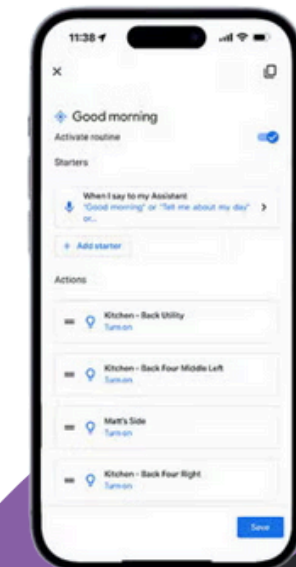
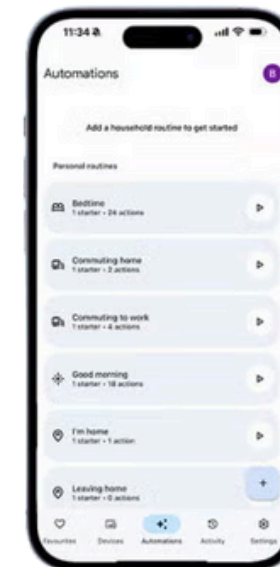
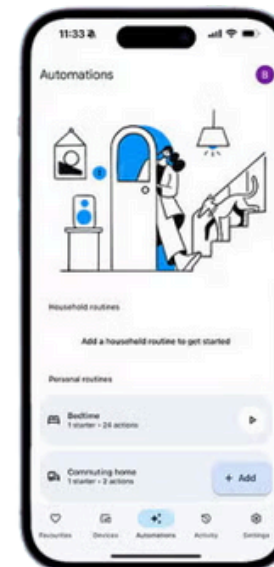
Setting Up Reminders: Step-by-step instructions on how to set up medication reminders using Google Assistant.

1. Open the Google Home app on your smartphone.
2. Tap on the 'Routines' option.
3. Tap on the '+' icon to create a new routine.
4. Set the trigger for the routine (e.g., 'Every day at 8 AM').
5. Add actions such as 'Remind me to take my medication'.
6. Save the routine.

Voice Commands: Examples of voice commands to check medication schedules and receive reminders.

"Hey Google, remind me to take my medication at 8 AM."

"Hey Google, what are my reminders for today?"



Control of Household Appliances

Connecting Smart Appliances: Guide on how to connect and control smart appliances (e.g., lights, thermostats, and plugs) using Google Nest and Google Home.

1. Open the Google Home app on your smartphone.
2. Tap on the 'Add' button.
3. Select 'Set up device'.
4. Choose the type of device you want to connect (e.g., light, thermostat).
5. Follow the on-screen instructions to complete the setup.

Voice Commands for Appliances: Examples of voice commands to control various household appliances.

"Hey Google, turn on the living room lights."

"Hey Google, set the thermostat to 22 degrees."

Further details can be found here:

https://store.google.com/intl/en_uk/ideas/articles/smart-home-tips-for-seniors/

Voice Commands for Appliances

Examples of voice commands to control various household appliances.

"Hey Google, turn on the living room lights."

"Hey Google, set the thermostat to 22 degrees."

Safety Features

Google Home can automatically turn off appliances after a certain period and allow remote monitoring through the app.

